



# AQP5 Polyclonal Antibody

<b>Catalog No</b>	YP-Ab-16382
<b>Isotype</b>	IgG
<b>Reactivity</b>	Human;Rat;Mouse;
<b>Applications</b>	WB;IHC;IF;ELISA
<b>Gene Name</b>	AQP5
<b>Protein Name</b>	Aquaporin-5
<b>Immunogen</b>	The antiserum was produced against synthesized peptide derived from human AQP5. AA range:194-243
<b>Specificity</b>	AQP5 Polyclonal Antibody detects endogenous levels of AQP5 protein.
<b>Formulation</b>	Liquid in PBS containing 50% glycerol, 0.5% BSA and 0.02% sodium azide.
<b>Source</b>	Polyclonal, Rabbit,IgG
<b>Purification</b>	The antibody was affinity-purified from rabbit antiserum by affinity-chromatography using epitope-specific immunogen.
<b>Dilution</b>	WB: 1/500 - 1/2000. IHC: 1/100 - 1/300. ELISA: 1/40000.. IF 1:50-200
<b>Concentration</b>	1 mg/ml
<b>Purity</b>	≥90%
<b>Storage Stability</b>	-20°C/1 year
<b>Synonyms</b>	AQP5; Aquaporin-5; AQP-5
<b>Observed Band</b>	35kD
<b>Cell Pathway</b>	Apical cell membrane ; Multi-pass membrane protein . Cell membrane ; Multi-pass membrane protein . Cytoplasmic vesicle membrane ; Multi-pass membrane protein . Hypotonicity increases location at the cell membrane. Phosphorylation decreases location at the cell membrane. .
<b>Tissue Specificity</b>	Detected in skin eccrine sweat glands, at the apical cell membrane and at intercellular canaliculi (at protein level).
<b>Function</b>	domain:Aquaporins contain two tandem repeats each containing three membrane-spanning domains and a pore-forming loop with the signature motif Asn-Pro-Ala (NPA).,function:Forms a water-specific channel. Implicated in the generation of saliva, tears, and pulmonary secretions.,similarity:Belongs to the MIP/aquaporin (TC 1.A.8) family.,
<b>Background</b>	Aquaporin 5 (AQP5) is a water channel protein. Aquaporins are a family of small integral membrane proteins related to the major intrinsic protein (MIP or AQP0). Aquaporin 5 plays a role in the generation of saliva, tears and pulmonary secretions. AQP0, AQP2, AQP5, and AQP6 are closely related and all map to 12q13. [provided by RefSeq, Jul 2008],



### matters needing attention

Avoid repeated freezing and thawing!

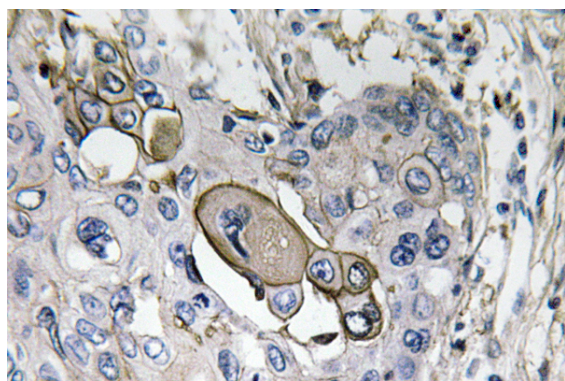
### Usage suggestions

This product can be used in immunological reaction related experiments. For more information, please consult technical personnel.

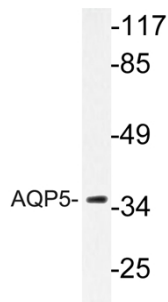
## Products Images



Western Blot analysis of various cells using AQP5 Polyclonal Antibody



Immunohistochemistry analysis of AQP5 antibody in paraffin-embedded human lung carcinoma tissue.



Western blot analysis of lysate from HUVEC cells, using AQP5 antibody.